

CERTIFICATE OF LOCATION OF GOVERNMENT CORNER

CENTER Corner of Section 24, Township 107, Range 40, 5TH P.M.

STATE OF MINNESOTA, County of MURRAY

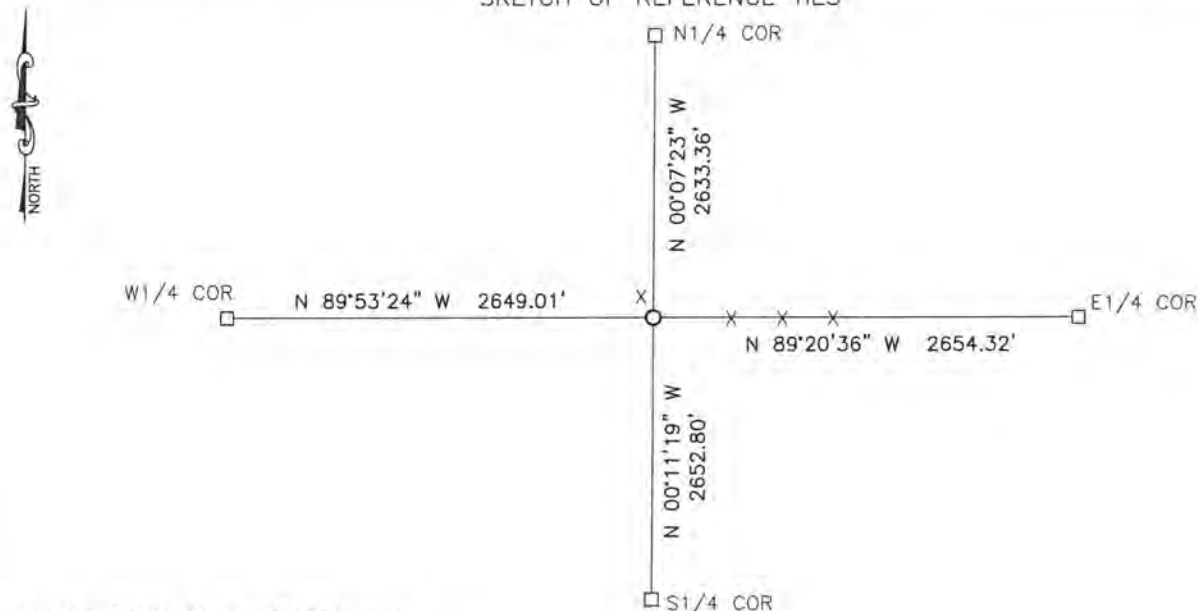
At the corner location shown on the sketch:

On 6/28/17 found a 8"x8"x20" stone 18" below grade and next to a
DATE corner fence post

left monument as found, lowered monument, removed monument (explain)

On 6/28/17 placed a 5/8" iron with seal #43844
DATE

SKETCH OF REFERENCE TIES



Minnesota State Plane Coordinate
 System Murray County Datum
 NAD83 (1996)

N: 176686.148
 E: 545726.005

Statement of evidence relative to this corner location is on back of page.

I hereby certify that this document and the data contained herein was prepared by me or under my direct supervision.

[Signature]
SIGNATURE

July 5, 2017
DATE

Registration No. 43844

- Land Surveyor, Professional Engineer
 County Surveyor, County Engineer

STATE OF MINNESOTA, }
 COUNTY OF MURRAY, } ss.

I hereby certify that the within Instrument was filed in this office for record on the 12th day of OCTOBER A.D. 20 17 at 11:00 o'clock A. M. and was duly recorded as Document No. _____

[Signature]
 County Recorder

Statement of Evidence

In 1861, L. Brockmann did the original subdivision of the township.

On October 12, 1895, J.W. Woolstencroft recorded a 8"x8"x20" at the corner. The recorded distances to the north quarter corner was 2638.02 feet and to the south quarter corner was 2650.56 feet.

On June 28, 2017, Bueltel-Moseng Land Surveying found a 8"x8"x20" stone 18" below grade and next to an old wood fence post. We set a 5/8" iron with seal #43844 over the stone. It is in line with the fence to the north, south, and east.